



SUNDAY, 1 MARCH 2009

CALLING ON ALL FEDERATED FARMERS MEMBERS

9AM-4PM (OR PART THEREOF)

WE NEED YOUR HELP

- parking cars
- welcoming guests at the gate
- guiding a walking group

If you can help out please let us know. We can't be sure how many people will be turning up so the more hands we have on deck the better.

Parking: Cars will be directed to the farm with Federated Farmers' signage. Once they arrive we need to park them in A&P showstyle in a pre-designated paddock. Please come with a safety vest.

Welcoming guests once their car is parked: Everyone will come through the same gate. They need to be welcomed, given a name tag and linked in to a group.

Guided walks: Every FARM DAY will have a guided walk around the farm. Groups will be kept to about 20 people. Each farm walk will last about one hour and there will be pre-arranged stops along the way. As the host your job will be to look after the group throughout the farm tour, tell some stories (not necessarily about this farm) and encourage the group to enjoy themselves. Your role is to be the face of farming. This is a great opportunity to build new friends in the non-farming community.

If you can help out please phone Tania Kerr on 06 834 9604 or email hawkesbay@fedfarm.org.nz



Hawke's Bay FARM DAY will be held at:

Trelinnoe Farm Park



**Our hosts are: Bruce and Scott Wills and their families
Napier-Taupo Road, Napier**

Bruce and Scott farm in partnership on a 1143 ha medium to steep Hawkes Bay hill country. They have 9000 stock units, including 4000 Romney ewes and 200 breeding cows and their replacements. One third of the property is protected in covenants or by trees and shelter belts. In 2008 they won the Rural Environmental Award.

To learn more about how you can help out with FARM DAY please phone or email Tanya Kerr.



'Federated Farmers of NZ wants to see sustainable returns for sheep meat. We are Targeting \$150 per stock unit'

LOCAL VOICE NEWSLETTER SPECIAL



JANUARY 2009

HAWKE'S BAY

FARM DAY

SUNDAY, 1ST MARCH 2009

Federated Farmers is holding the first New Zealand-wide, open FARM DAY on Sunday March 1st. The Hawke's Bay province's FARM DAY will be held at Bruce & Scott Wills' property, Trelinnoe, on the Napier - Taupo Road.

New Zealand needs farming families and urban folk to work together for the benefit of our economy and our environment. Inviting our urban cousins out onto a farm and explaining and showing what we do and why we do it, will help the understanding between town and country. Many members already showcase their properties to community groups and a national open day will add to that communication.

Our two take home messages from the day are simple and clear. We want people to remember that

- New Zealand farmers grow healthy and safe food
- New Zealand farmers care about the environment

I am asking all members to hang page two of this flyer in a local shop, take it to the local school, or pass it on to a non-farming friend.

We cannot run this day without your support. If you could help out, it would be great, because the more helpers we have on deck, the easier it will be to pull off a great event.

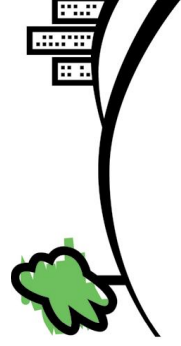


I hope to see you on March 1st.
Many thanks

Kevin Mitchell
Hawke's Bay President



**FEDERATED
FARMERS**
OF NEW ZEALAND



FARM DAY

Discover the Country



SUNDAY, 1 MARCH 2009

Join us for a great day in the country, come and experience the sights, sounds and smells of farming.

WHERE: Bruce and Scott Wills and their families farm on the Napier-Taupo Road, Napier

TIME: 10am-3pm

RSVP: For all FARM DAY events please phone: 07 838 2589 or email: admin@fedfarm.org.nz

ACTIVITIES:

- Guided farm walk
- Viewing of commercial sheep shearing
- Walk through the Botanical Park

FARM DAY is a national agricultural event coordinated and hosted by Federated Farmers of New Zealand