



SUNDAY, 1 MARCH 2009

CALLING ON ALL FEDERATED FARMERS MEMBERS

9AM-4PM (OR PART THEREOF)

WE NEED YOUR HELP

- parking cars
- welcoming guests at the gate
- guiding a walking group

If you can help out please let us know. We can't be sure how many people will be turning up so the more hands we have on deck the better.

Parking: Cars will be directed to the farm with Federated Farmers' signage. Once they arrive we need to park them in A&P showstyle in a pre-designated paddock. Please come with a safety vest.

Welcoming guests once their car is parked: Everyone will come through the same gate. They need to be welcomed, given a name tag and linked in to a group.

Guided walks: Every FARM DAY will have a guided walk around the farm. Groups will be kept to about 20 people. Each farm walk will last about one hour and there will be pre-arranged stops along the way. As the host your job will be to look after the group throughout the farm tour, tell some stories (not necessarily about this farm) and encourage the group to enjoy themselves. Your role is to be the face of farming. This is a great opportunity to build new friends in the non-farming community.

If you can help out please phone Kim Cawte on 07 578 5039 or email kcawte@fedfarm.org.nz



Bay of Plenty FARM DAY will be held at:

Killyhevlin Farm



Our hosts are: Dave and Nicky Hurst

1531 State Highway 2, Te Puke

Dave and Nicky have a dairy farm on the north side of Te Puke. The farm offers a great circuit walk along the raceways where people will be able to view pasture, silage, the effluent pond and a new herringbone milking shed. We have some good ideas on how to make this an informative event with plenty of opportunities for farmers to talk about the practical realities of a dairy farm business.

This is not a 'wander at will' farm tour. The public will be met at the gate, put in to groups and escorted around the farm.

We need your help on the day to make FARM DAY a success. Please think about lending a hand.

To learn more about this farm and how you can help out, we are hosting a planning session at the farm. Please ring Kim Cawte to put your hand up for:

- parking cars
- welcoming guests at the gate
- guiding a walking group

LOCAL VOICE NEWSLETTER SPECIAL



JANUARY 2009

BAY OF PLENTY

FARM DAY

SUNDAY, 1ST MARCH 2009

Federated Farmers is holding the first New Zealand-wide, open FARM DAY this year. The Bay of Plenty province's FARM DAY will be held at Dave and Nicky Hurst's farm, Te Puke.

FARM DAY is a great chance for us to showcase New Zealand farming and the great work that we do. It is essential to bridge the ever-widening urban/rural divide in New Zealand. There is a widening gap between us all and this initiative is a very positive step to help close the rift and to foster a better understanding and appreciation of each others views.

Our two take home messages from the day are simple and clear. We want people to remember that

- New Zealand farmers grow healthy and safe food
- New Zealand farmers care about the environment

I am asking all members to hang page two of this flyer in a local shop, take it to the local school, or pass it on to a non-farming friend.

We cannot run this day without your support. If you could help out, it would be great, because the more helpers we have on deck, the easier it will be to pull off a great event.

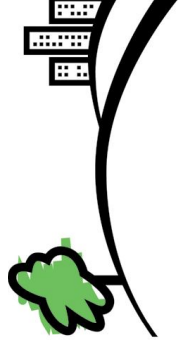


I hope to see you on March 1st.
Many thanks

Alan Law
Bay of Plenty President



**FEDERATED
FARMERS**
OF NEW ZEALAND



FARMDAY

Discover the Country



SUNDAY, 1 MARCH 2009

Join us for a great day in the country, come and experience the sights, sounds and smells of farming.

WHERE: Dave and Nicky Hurst
1531 State Highway 2, Te Puke

TIME: 10am-3pm

RSVP: For all FARM DAY events please phone:
07 838 2589 or email: admin@fedfarm.org.nz

ACTIVITIES:

- Guided farm walk
- Interactive activities for children
- Farm demonstration

FARM DAY is a national agricultural event coordinated and hosted by Federated Farmers of New Zealand