



SUNDAY, 1 MARCH 2009

CALLING ON ALL FEDERATED FARMERS MEMBERS

9AM-4PM (OR PART THEREOF)

WE NEED YOUR HELP

- parking cars
- welcoming guests at the gate
- guiding a walking group

If you can help out please let us know. We can't be sure how many people will be turning up so the more hands we have on deck the better.

Parking: Cars will be directed to the farm with Federated Farmers' signage. Once they arrive we need to park them in A&P show style in a pre-designated paddock. Please come with a safety vest.

Welcoming guests once their car is parked: Everyone will come through the same gate. They need to be welcomed, given a name tag and linked in to a group.

Guided walks: Every FARM DAY will have a guided walk around the farm. Groups will be kept to about 20 people. Each farm walk will last about one hour and there will be pre-arranged stops along the way. As the host your job will be to look after the group throughout the farm tour, tell some stories (not necessarily about this farm) and encourage the group to enjoy themselves. Your role is to be the face of farming. This is a great opportunity to build new friends in the non-farming community.

If you can help out please phone Brian Doughty on 06 342 1846 or email r-bdoughty@xtra.co.nz



'Trevor and Julie's son Fraser helps out on the farm'

Our hosts are: Trevor and Julie Laird

181 No 2 Line, Wanganui

Trevor and Julie Laird grows squash and barley along with grazing sheep and deer on their rolling hill country farm near Wanganui. Their stock and crops are both in good condition this year after the farm received plenty of rain over Christmas.

Trevor and Julie are the second generation to run the farm. Their son Fraser is currently studying towards a Diploma in Agriculture at Lincoln University. Their other son Steven is currently working on the farm. Both may one day follow in the footsteps of his father and grandfather.

Visitors to Trevor and Julie's farm will be able to see how they rotate their crops every couple of years to rebuild nutrients in the soil. They will also be on one of the few farms in the country that has a stunning view of both Mount Ruapehu and Mount Taranaki.

This is not a 'wander at will' farm tour. The public will be met at the gate, put in to groups and escorted around the farm.

We need your help on the day to make FARM DAY a success. Please think about lending a hand.

To learn more about this farm and how you can help, please phone or email Brian Doughty on 06 342 1846 or email r-bdoughty@xtra.co.nz

LOCAL VOICE
NEWSLETTER SPECIAL



JANUARY 2009

WANGANUI

FARM DAY

SUNDAY, 1ST MARCH 2009

Federated Farmers is holding the first New Zealand-wide, open FARM DAY on Sunday March 1st. The Wanganui province's FARM DAY will be held at Trevor & Julie Laird's property, Fordell (#2 Line).

Wanganui province is keen to build bridges with our non-farming community. We think that this will be a great way to encourage people from the town to come into the country for the day. We look forward to having an opportunity to explain how we farm and what the land is producing.

Our two take home messages from the day are simple and clear. We want people to remember that

- New Zealand farmers grow healthy and safe food
- New Zealand farmers care about the environment

I am asking all members to hang page two of this flyer in a local shop, take it to the local school, or pass it on to a non-farming friend.

We cannot run this day without your support. If you could help out, it would be great, because the more helpers we have on deck, the easier it will be to pull off a great event.

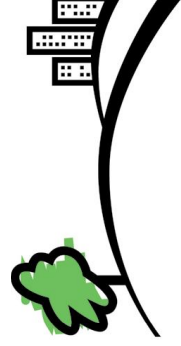


I hope to see you on March 1st.
Many thanks

Brian Doughty
Wanganui President



**FEDERATED
FARMERS**
OF NEW ZEALAND



FARM DAY

Discover the Country



SUNDAY, 1 MARCH 2009

Join us for a great day in the country, come and experience the sights, sounds and smells of farming.

WHERE: Trevor & Julie Laird
181 No 2 Line, Wanganui

TIME: 10am-3pm

RSVP: For all FARM DAY events please phone:
07 838 2589 or email: admin@fedfarm.org.nz

ACTIVITIES:

- Guided farm walk

FARM DAY is a national agricultural event coordinated and hosted by Federated Farmers of New Zealand