



SUNDAY, 1 MARCH 2009

CALLING ON ALL FEDERATED FARMERS MEMBERS

9AM-4PM (OR PART THEREOF)

WE NEED YOUR HELP

- parking cars
- welcoming guests at the gate
- guiding a walking group

If you can help out please let us know. We can't be sure how many people will be turning up so the more hands we have on deck the better.

Parking: Cars will be directed to the farm with Federated Farmers' signage. Once they arrive we need to park them in A&P showstyle in a pre-designated paddock. Please come with a safety vest.

Welcoming guests once their car is parked: Everyone will come through the same gate. They need to be welcomed, given a name tag and linked in to a group.

Guided walks: Every FARM DAY will have a guided walk around the farm. Groups will be kept to about 20 people. Each farm walk will last about one hour and there will be pre-arranged stops along the way. As the host your job will be to look after the group throughout the farm tour, tell some stories (not necessarily about this farm) and encourage the group to enjoy themselves. Your role is to be the face of farming. This is a great opportunity to build new friends in the non-farming community.

If you can help out please phone Sue Wall on 0800 327 646 or email swall@fedfarm.org.nz



Tararua FARM DAY will be held at:

Otawahao Station



Our hosts are: **Nick and Carron Perry**
171 Potter Road, RD 1, Woodville

Nick and Carron have a sheep and beef hill country property near Woodville. The property offers fantastic views out across farm land and down into the Manawatu River valley. They have protected conservation covenants with QEII Trust.

This is not a 'wander at will' farm tour. The public will be met at the gate, put in to groups and escorted around the farm.

We need your help on the day to make FARM DAY a success. Please think about lending a hand.

To learn more about this farm and how you can help on the day, please phone or email either:

Sue Wall on 0800 327 646 email swall@fedfarm.org.nz or
Andrew Day on 06 376 7397 email andrew-day@xtra.co.nz

LOCAL VOICE

NEWSLETTER SPECIAL



JANUARY 2009

TARARUA

FARM DAY

SUNDAY, 1ST MARCH 2009

Federated Farmers is holding the first New Zealand-wide, open FARM DAY on Sunday March 1st. The Tararua province's FARM DAY will be held at Otawahao Station, Woodville.

Tararua Federated Farmers are looking forward to the inaugural FARM DAY. It will be a great chance for farmers to showcase what they're about and a good chance for urban families to come and see what is involved with a real working farm. New Zealand needs farmers and farmers need a good rapport with the rest of the community. FARM DAY will allow those people without direct connection with farms the opportunity to come and see what all the fuss is about.

The message we want people to remember from the day is that New Zealand farmers grow healthy, safe food.

I am asking all members to hang page two of this flyer in a local shop, take it to the local school, or pass it on to a non-farming friend.

We cannot run this day without your support. If you could help out, it would be great. It is clear that the more helpers on deck, the easier it will be to pull off a great event.

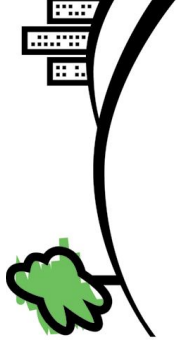


I hope to see you on March 1st.
Many thanks

Andrew Day
Tararua President



**FEDERATED
FARMERS**
OF NEW ZEALAND



FARM DAY

Discover the Country



SUNDAY, 1 MARCH 2009

Join us for a great day in the country, come and experience the sights, sounds and smells of farming.

WHERE: Nick and Carron Perry
171 Potter Road, RD 1, Woodville

TIME: 10am-3pm

RSVP: For all FARM DAY events please phone:
07 838 2589 or email: admin@fedfarm.org.nz

ACTIVITIES:

- Farm tour
- Viewing of new center pivot irrigator
- Use of solar power to run stock water system

FARM DAY is a national agricultural event coordinated and hosted by Federated Farmers of New Zealand