



SUNDAY, 1 MARCH 2009

CALLING ON ALL FEDERATED FARMERS MEMBERS

9AM-4PM (OR PART THEREOF)

WE NEED YOUR HELP

- parking cars
- welcoming guests at the gate
- guiding a walking group

If you can help out please let us know. We can't be sure how many people will be turning up so the more hands we have on deck the better.

Parking: Cars will be directed to the farm with Federated Farmers' signage. Once they arrive we need to park them in A&P showstyle in a pre-designated paddock. Please come with a safety vest.

Welcoming guests once their car is parked: Everyone will come through the same gate. They need to be welcomed, given a name tag and linked in to a group.

Guided walks: Every FARM DAY will have a guided walk around the farm. Groups will be kept to about 20 people. Each farm walk will last about one hour and there will be pre-arranged stops along the way. As the host your job will be to look after the group throughout the farm tour, tell some stories (not necessarily about this farm) and encourage the group to enjoy themselves. Your role is to be the face of farming. This is a great opportunity to build new friends in the non-farming community.

If you can help out please phone Sue Wall on 06 357 4026 or email swall@fedfarm.org.nz



Our hosts are: Taratahi Ag Training Centre
State Highway 11, Masterton

Federated Farmers of NZ Wairarapa provinces's FARM DAY will be held at Taratahi Agricultural Training Centre. We think that Taratahi is a great place to host our FARM DAY event as it offers lots of things for people to see and do.

The Centre is well located in our region. It is based near Masterton and is only an hours drive from Wellington and Palmerston North.

Taratahi has over 6,000 hectares of commercial farms and offers courses on just about everything rural. It is a good place for people to learn more about farm animals, how to safely use farm equipment and do practical farm tasks like building fences and drenching sheep. We hope to be able to provide people with opportunities at our FARM DAY event to have a go at doing some of these things themselves.

We are also keen to support Taratahi promote itself using the FARM DAY opportunity, although the event will be very much running in line with the Federated Farmers model of offering guided walks using our members to escort the groups.

This is not a 'wander at will' farm tour. The public will be met at the gate, put in to groups and escorted around the farm.

We need your help on the day to make FARM DAY a success. Please think about lending a hand.

To learn more about this farm and how you can help on the day, please phone Sue Wall on 06 357 4026 or email swall@fedfarm.org.nz

LOCAL VOICE
NEWSLETTER SPECIAL



JANUARY 2009

WAIRARAPA

FARM DAY

SUNDAY, 1ST MARCH 2009

Federated Farmers is holding the first New Zealand-wide, open FARM DAY on Sunday March 1st. The Wairarapa province's FARM DAY will be held at Taratahi Ag Training Centre, Masterton.

Wairarapa province is looking forward to making FARM DAY a great day out for everyone. This will not be a sanitised farm experience, but a chance for urban people to meet real farmers, talk about farming and be inspired by farming. Many children lack the chance to walk through a paddock, or see New Zealand's major farm animal types. We hope that children will go away and seriously investigate becoming a farming professional.

Our two take home messages from the day are simple and clear. We want people to remember that

- New Zealand farmers grow healthy and safe food
- New Zealand farmers care about the environment

I am asking all members to hang page two of this flyer in a local shop, take it to the local school, or pass it on to a non-farming friend.

We cannot run this day without your support. If you could help out, it would be great, because the more helpers we have on deck, the easier it will be to pull off a great event.



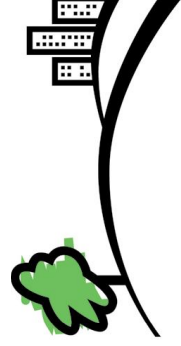
I hope to see you on March 1st.
Many thanks

Anders Crofoot
Wairarapa President

WWW.FEDFARM.ORG.NZ | 0800 327 646



**FEDERATED
FARMERS**
OF NEW ZEALAND



FARMDAY

Discover the Country



SUNDAY, 1 MARCH 2009

Join us for a great day in the country, come and experience the sights, sounds and smells of farming.

WHERE: Taratahi Ag Training Centre
State Highway 11, Masterton

TIME: 10am-3pm

RSVP: For all FARM DAY events please phone:
07 838 2589 or email: admin@fedfarm.org.nz

ACTIVITIES:

- Farm walk
- Sheep mustering demonstration
- Farm machinery and tractor display

FARM DAY is a national agricultural event coordinated and hosted by Federated Farmers of New Zealand