

SUNDAY, 1 MARCH 2009

CALLING ON ALL FEDERATED FARMERS MEMBERS

9AM-4PM (OR PART THEREOF)

WE NEED YOUR HELP

- parking cars
- welcoming guests at the gate
- guiding a walking group



If you can help out please let us know. We can't be sure how many people will be turning up so the more hands we have on deck the better.

**Parking:** Cars will be directed to the farm with Federated Farmers' signage. Once they arrive we need to park them in A&P show style in a pre-designated paddock. Please come with a safety vest.

**Welcoming guests once their car is parked:** Everyone will come through the same gate. They need to be welcomed, given a name tag and linked in to a group.


**Guided walks:** Every FARM DAY will have a guided walk around the farm. Groups will be kept to about 20 people. Each farm walk will last about one hour and there will be pre-arranged stops along the way. As the host your job will be to look after the group throughout the farm tour, tell some stories (not necessarily about this farm) and encourage the group to enjoy themselves. Your role is to be the face of farming. This is a great opportunity to build new friends in the non-farming community.

If you can help out please phone Karen Krog on 03 307 8145 or email [midcanterbury@fedfarm.org.nz](mailto:midcanterbury@fedfarm.org.nz)

Mid Canterbury FARM DAY will be held at:

## Parkfields



*Neville and Andrea Chalmers*

**Our hosts are: Neville and Andrea Chalmers**

**890 Fords Road, Flemington**

Parkfields is a 220ha arable farm, owned by Neville and Andrea Chalmers at Flemington. The farm makes up part of their farming and agricultural contracting business and has heavy soils which are extensively tiled drained. The Chalmers also graze dairy cattle on contract and run some sheep. Parkfields is an excellent example of farm diversification and has some remanent buildings from earlier 'wild deer' capture enterprises.

FARM DAY will include two circuit walks around the farm; a shorter walk for older people and a slightly longer one for families and children. The unused deer capture sheds will be turned in to a 'farmers' grotto and maze' with plenty of adventures and creative activities for young children.

**This is not a 'wander at will' farm tour. The public will be met at the gate, put in to groups and escorted around the farm.**

We need your help on the day to make FARM DAY a success. Please think about lending a hand.

To learn more about this farm and how you can help, we are hosting a planning session at the farm on Tuesday, 24th February at 8.30 am. Please put your hand up for:

- parking cars
- welcoming guests at the gate
- guiding a walking group



# LOCAL VOICE

## NEWSLETTER SPECIAL

JANUARY 2009

MID CANTERBURY

## FARM DAY

### SUNDAY, 1<sup>ST</sup> MARCH 2009

Federated Farmers is holding the first New Zealand-wide, open FARM DAY this year. The Mid Canterbury province FARM DAY will be held at Parkfields, owned by Neville and Andrea Chalmers.

FARM DAY presents a great opportunity for the Federation to showcase New Zealand farming and the great work that we do. It will be good to have the chance to reacquaint some in Mid-Canterbury that this area is still the bread bowl and seed house of New Zealand.

We plan to have displays and fun activities to show how a modern mixed farm such as the Chalmers' works.

Our two take home messages from the day are simple and clear. We want people to remember that

- New Zealand farmers grow healthy and safe food
- New Zealand farmers care about the environment

**I am asking all members to hang page two of this flyer in a local shop, take it to the local school, or pass it on to a non-farming friend.**

We cannot run this day without your support. If you could help out, it would be great, because the more helpers we have on deck, the easier it will be to pull off a great event.



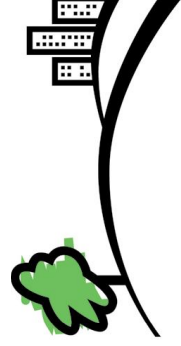
I hope to see you on March 1st.  
Many thanks

Michael Morrow  
Mid Canterbury President

[WWW.FEDFARM.ORG.NZ](http://WWW.FEDFARM.ORG.NZ) | 0800 327 646



**FEDERATED  
FARMERS**  
OF NEW ZEALAND



# FARM DAY

*Discover the Country*



## SUNDAY, 1 MARCH 2009

Join us for a great day in the country, come and experience the sights, sounds and smells of farming.

**WHERE:** Parklands

890 Fords Road, Flemington

Sign posted from:

Tinwald

**TIME:** 10am-3pm

**RSVP:**

For all FARM DAY events please phone:  
07 838 2589 or email: [admin@fedfarm.org.nz](mailto:admin@fedfarm.org.nz)

**ACTIVITIES:**

- Farm walk (including a shortened walk for the less mobile)
- Farmer's grotto with interactive experiences for children
- Hay Jump
- Animal autopsy
- Food - Fundraiser (Longbeach School)
- Farm equipment and demonstrations

---

FARM DAY is a national agricultural event coordinated and hosted by Federated Farmers of New Zealand