



SUNDAY, 1 MARCH 2009

CALLING ON ALL FEDERATED FARMERS MEMBERS

9AM-4PM (OR PART THEREOF)

WE NEED YOUR HELP

- parking cars
- welcoming guests at the gate
- guiding a walking group

If you can help out please let us know. We can't be sure how many people will be turning up so the more hands we have on deck the better.

Parking: Cars will be directed to the farm with Federated Farmers' signage. Once they arrive we need to park them in A&P showstyle in a pre-designated paddock. Please come with a safety vest.

Welcoming guests once their car is parked: Everyone will come through the same gate. They need to be welcomed, given a name tag and linked in to a group.

Guided walks: Every FARM DAY will have a guided walk around the farm. Groups will be kept to about 20 people. Each farm walk will last about one hour and there will be pre-arranged stops along the way. As the host your job will be to look after the group throughout the farm tour, tell some stories (not necessarily about this farm) and encourage the group to enjoy themselves. Your role is to be the face of farming. This is a great opportunity to build new friends in the non-farming community.

If you can help out please phone Hamish Cave on 06 863 9861 or email hamishc@gisborne.net.nz



Gisborne/Wairoa FARM DAY will be held at:

Wairakaia Station



**Our hosts are: Robert and Sandra Faulkner
1952 State Highway 2 (wharerata Road), Muriwai**

Wairakaia Station is a 620 hectare property south of Gisborne. The stock includes breeding ewes and ewe hoggets. Farming is in the blood of the Faulkner's for together with his sister Jo, Rob Faulkner represents the fourth generation to farm on Wairakaia Station. Even Rob's wife, Sandra, hails from back country Hawke's Bay. Rob runs the livestock while Jo's husband, Bruce Graham, looks after cropping operations carried out on about 100 hectare of flat land. Pumpkin is grown on the farm along with 200 tonne of maize for seed. They also have a 10 hectare citrus plantation.

This is not a 'wander at will' farm tour. The public will be met at the gate, put in to groups and escorted around the farm.

We need your help on the day to make FARM DAY a success. Please think about lending a hand.

To learn more about this farm and how you can help on the day, please phone Hamish Cave on 06 863 9861 or email hamishc@gisborne.net.nz

LOCAL VOICE NEWSLETTER SPECIAL



JANUARY 2009

GISBORNE | WAIROA

FARM DAY

SUNDAY, 1ST MARCH 2009

Federated Farmers is holding the first New Zealand-wide, open FARM DAY on Sunday March 1st. The Gisborne/Wairoa province's FARM DAY will be held at Robert and Sandra Faulkner's property, Muriwai.

Gisborne/Wairoa province is keen to build bridges with our non-farming community. We think that FARM DAY will be a great way to encourage people from the town to come into the country for the day. We look forward to having an opportunity to explain how we farm and what the land is producing.

Our two take home messages from the day are simple and clear. We want people to remember that

- New Zealand farmers grow healthy and safe food
- New Zealand farmers care about the environment

I am asking all members to hang page two of this flyer in a local shop, take it to the local school, or pass it on to a non-farming friend.

We cannot run this day without your support. If you could help out, it would be great, because the more helpers we have on deck, the easier it will be to pull off a great event.

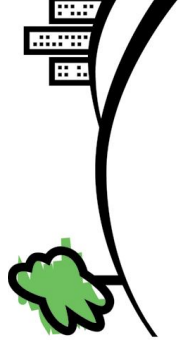


I hope to see you on March 1st.
Many thanks

Hamish Cave
Gisborne/Wairoa President



**FEDERATED
FARMERS**
OF NEW ZEALAND



FARMDAY

Discover the Country



SUNDAY, 1 MARCH 2009

Join us for a great day in the country, come and experience the sights, sounds and smells of farming.

WHERE: Robert and Sandra Faulkner
Wairakaia Station,
1952 State Highway 2 (Wharerata Road), Muriwai

TIME: 10am-3pm

RSVP: For all FARM DAY events please phone:
07 838 2589 or email: admin@fedfarm.org.nz

ACTIVITIES:

- Farm walk
- Tour of the citrus orchard
- Pumpkin harvesting

FARM DAY is a national agricultural event coordinated and hosted by Federated Farmers of New Zealand