

SUNDAY, 1 MARCH 2009

CALLING ON ALL FEDERATED FARMERS MEMBERS

9AM-4PM (OR PART THEREOF)

WE NEED YOUR HELP

- parking cars
- welcoming guests at the gate
- guiding a walking group

If you can help out please let us know. We can't be sure how many people will be turning up so the more hands we have on deck the better.

Parking: Cars will be directed to the farm with Federated Farmers' signage. Once they arrive we need to park them in A&P showstyle in a pre-designated paddock. Please come with a safety vest.

Welcoming guests once their car is parked: Everyone will come through the same gate. They need to be welcomed, given a name tag and linked in to a group.

Guided walks: Every FARM DAY will have a guided walk around the farm. Groups will be kept to about 20 people. Each farm walk will last about one hour and there will be pre-arranged stops along the way. As the host your job will be to look after the group throughout the farm tour, tell some stories (not necessarily about this farm) and encourage the group to enjoy themselves. Your role is to be the face of farming. This is a great opportunity to build new friends in the non-farming community.

If you can help out please phone either;

Stew Wadey 027 277 9996 or

Gaylene Bamford 07 858 0820 or gbamford@fedfarm.org.nz

Waikato FARM DAY will be held at:

Bentham Farm



Our hosts are: Doug and Kathy Bentham

647 Alexandra Road, RD 1, Te Aroha

Sign posted from: Stanley Road South, Te Aroha. Diagonal Road, Ngarua. Wardville Road, Waharoa.

Doug and Kathy have a certified organic dairy cow and a dairy goat milk farm at Te Aroha, 35 minutes from Hamilton. Their 480 head goat farm will be open to the public. The goats are friendly and extremely cute.

This is not a 'wander at will' farm tour. The public will be met at the gate, put in to groups and escorted around the farm.

We need your help on the day to make FARM DAY a success. Please think about lending a hand.

To learn more about this farm and how you can help, we are hosting a planning session on Tuesday, 24th February at 11 am. Please put your hand up for:

- parking cars
- welcoming guests at the gate
- guiding a walking group

Calling on all Waikato provincial members - we will need your help with this day to make it a great success.

JANUARY 2009

WAIKATO

FARM DAY

SUNDAY, 1ST MARCH 2009

Federated Farmers is holding the first New Zealand-wide, open FARM DAY on Sunday, 1 March. The Waikato province's FARM DAY will be held at Bentham Farm, Te Aroha.

FARM DAY is a great chance for the Federation to showcase New Zealand farming and the great work that we do. We need to make every effort to bridge the ever-widening, urban/rural divide and to stop it expanding further. You can't get away from the fact that New Zealand's economy is agriculturally based and that we need to work together for the benefit of our economy and our environment.

Our two take home messages from the day are simple and clear. We want people to remember that

- New Zealand farmers grow healthy and safe food
- New Zealand farmers care about the environment

I am asking all members to hang page two of this flyer in a local shop, take it to the local school, or pass it on to a non-farming friend.

We cannot run this day without your support. If you could help out, it would be great, because the more helpers we have on deck, the easier it will be to pull off a great event.

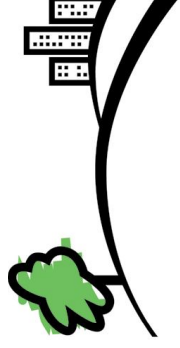


I hope to see you on March 1st.
Many thanks

Stew Wadey
Waikato President



**FEDERATED
FARMERS**
OF NEW ZEALAND



FARM DAY

Discover the Country



SUNDAY, 1 MARCH 2009

Join us for a great day in the country, come and experience the sights, sounds and smells of farming.

WHERE: Doug & Kathy Bentham
647 Alexandra Road, RD 1, Te Aroha

Sign posted from:
Stanley Road South, Te Aroha
Diagonal Road, Ngarua
Wardville Road, Waharoa

TIME: 10am-3pm

RSVP: For all FARM DAY events please phone:
07 838 2589 or email: admin@fedfarm.org.nz

ACTIVITIES:

- One hour farm walk
- Pet the goats
- Sausage sizzle

FARM DAY is a national agricultural event coordinated and hosted by Federated Farmers of New Zealand