

SUNDAY, 1 MARCH 2009

CALLING ON ALL FEDERATED FARMERS MEMBERS

9AM-4PM (OR PART THEREOF)

WE NEED YOUR HELP

- parking cars
- welcoming guests at the gate
- guiding a walking group

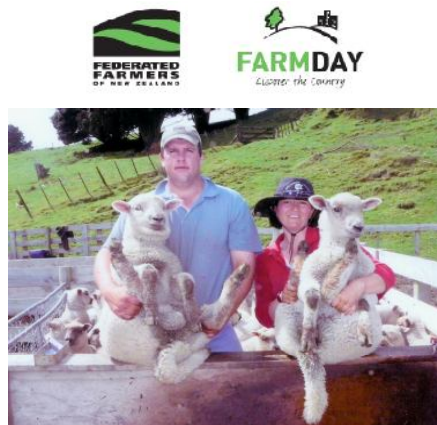
If you can help out please let us know. We can't be sure how many people will be turning up so the more hands we have on deck the better.

**Parking:** Cars will be directed to the farm with Federated Farmers' signage. Once they arrive we need to park them in A&P showstyle in a pre-designated paddock. Please come with a safety vest.

**Welcoming guests once their car is parked:** Everyone will come through the same gate. They need to be welcomed, given a name tag and linked in to a group.

**Guided walks:** Every FARM DAY will have a guided walk around the farm. Groups will be kept to about 20 people. Each farm walk will last about one hour and there will be pre-arranged stops along the way. As the host your job will be to look after the group throughout the farm tour, tell some stories (not necessarily about this farm) and encourage the group to enjoy themselves. Your role is to be the face of farming. This is a great opportunity to build new friends in the non-farming community.

**If you can help out please phone Lyn Neeson on 07 893 8547 or email [alyn@xtra.co.nz](mailto:alyn@xtra.co.nz)**



*"Rob & Teresa Sherson"*

**Our hosts are: Brian and Sharon Sherson  
40 Meads Road, Taumarunui**

Brian and Sharon Sherson run a hill country, sheep and beef farm near Taumarunui. The couple purchased the original property in 1971 and, over the years, they have built the farm up to 598 hectares.

Brian and Sharon run 1800 ewes on their property. Ram hoggets are run through the winter and more than 100 rams are sold annually on the farm to commercial farmers. Brian and Sharon also hold an annual bull sale in which they sell about 40 bulls each year.

The couple's youngest son, Robin, has been working full time on the farm for the past two years. Robin is a fourth generation farmer in the Taumarunui province. Visitors to Brian and Sharon's farm on FARM DAY will be treated to a short tour and several farm demonstrations.

**This is not a 'wander at will' farm tour. The public will be met at the gate, put in to groups and escorted around the farm.**

We need your help on the day to make FARM DAY a success. Please think about lending a hand.

To learn more about this farm and how you can help on the day, please phone or email Lyn Neeson on 07 893 8547 or email [alyn@xtra.co.nz](mailto:alyn@xtra.co.nz)

FARM DAY  
SUNDAY, 1<sup>ST</sup> MARCH 2009

Federated Farmers is holding the first New Zealand-wide, open FARM DAY on Sunday March 1<sup>st</sup>. The Ruapehu province's FARM DAY will be held at Brian & Sharon Sherson's property, Meads Road, off Taumarunui/Turangi Road.

Ruapehu province welcomes this opportunity to entertain and share the farm with urban people. We are keen to point out and illustrate the positive things farmers are doing, rather than the 'dirty little secrets' that some seem to believe.

Our two take home messages from the day are simple and clear. We want people to remember that

- New Zealand farmers grow healthy and safe food
- New Zealand farmers care about the environment

**I am asking all members to hang page two of this flyer in a local shop, take it to the local school, or pass it on to a non-farming friend.**

We cannot run this day without your support. If you could help out, it would be great, because the more helpers we have on deck, the easier it will be to pull off a great event.

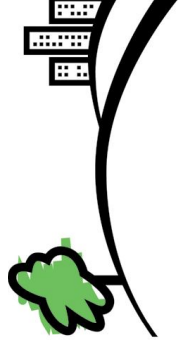


I hope to see you on March 1st.  
Many thanks

Lyn Neeson  
Ruapehu President



**FEDERATED  
FARMERS**  
OF NEW ZEALAND



# FARMDAY

*Discover the Country*



## SUNDAY, 1 MARCH 2009

Join us for a great day in the country, come and experience the sights, sounds and smells of farming.

**WHERE:** Brian & Sharon Sherson  
40 Meads Road, Taumarunui

**TIME:** 10am-3pm

**RSVP:** For all FARM DAY events please phone:  
07 838 2589 or email: [admin@fedfarm.org.nz](mailto:admin@fedfarm.org.nz)

**ACTIVITIES:**

- 15-20 minute guided farm walk
- Sheep mustering demonstration
- Shearing and wool spinning demonstration
- Food and drinks available

---

FARM DAY is a national agricultural event coordinated and hosted by Federated Farmers of New Zealand