



SUNDAY, 1 MARCH 2009

CALLING ON ALL FEDERATED FARMERS MEMBERS

9AM-4PM (OR PART THEREOF)

WE NEED YOUR HELP

- parking cars
- welcoming guests at the gate
- guiding a walking group

If you can help out please let us know. We can't be sure how many people will be turning up so the more hands we have on deck the better.

Parking: Cars will be directed to the farm with Federated Farmers' signage. Once they arrive we need to park them in A&P show style in a pre-designated paddock. Please come with a safety vest.

Welcoming guests once their car is parked: Everyone will come through the same gate. They need to be welcomed, given a name tag and linked in to a group.

Guided walks: Every FARM DAY will have a guided walk around the farm. Groups will be kept to about 20 people. Each farm walk will last about one hour and there will be pre-arranged stops along the way. As the host your job will be to look after the group throughout the farm tour, tell some stories (not necessarily about this farm) and encourage the group to enjoy themselves. Your role is to be the face of farming. This is a great opportunity to build new friends in the non-farming community.

If you can help out please phone either;

Peter Adamski 027 555 0875 or

Shelley Porteous 06 757 3423 or taranaki@fedfarm.org.nz



'Daughter Erin loves to help on the farm'

Our hosts are: Murray and Zoe Barrett

241 Barrett Road, New Plymouth

Murray and Zoe Barrett milk 600 cows on their 300 hectare farm near New Plymouth. Murray's parents started farming the property about 45 years ago.

The public will be able to take a tour of Murray and Zoe's farm on Farm Day that will cover areas of interest such as the 44-bale rotary milking shed and Barrett Lagoon.

Murray and Zoe's farm is located on the New Plymouth town boundary. Murray is used to people roaming the farm, as there are several public walking tracks around Barrett Lagoon, which is located on his property.

Refreshments will be available to purchase at Murray and Zoe's farm on Farm Day.

This is not a 'wander at will' farm tour. The public will be met at the gate, put in to groups and escorted around the farm.

We need your help on the day to make FARM DAY a success. Please think about lending a hand.

To learn more about this farm and how you can help on the day, please phone or email either;

Peter Adamski 027 555 0875 or

Shelley Porteous on 06 757 3423 or email

taranaki@fedfarm.org.nz

LOCAL VOICE
NEWSLETTER SPECIAL



JANUARY 2009

TARANAKI

FARM DAY

SUNDAY, 1ST MARCH 2009

Federated Farmers is holding the first New Zealand-wide, open FARM DAY on Sunday March 1st. The Taranaki province's FARM DAY will be held at Murray and Zoe Barrett's property, New Plymouth.

Taranaki province see this day as an opportunity to bring urban families closer to rural farming. We stress this is family day out to see a working dairy farm in operation. We want to encourage people to come and watch cows being milked in the afternoon, walk around the farm with a dairy farmer and ask those burning questions they have. We plan to have a display from Taranaki Regional Council and competitions for children, plus a lot more.

Our two take home messages from the day are simple and clear. We want people to remember that

- New Zealand farmers grow healthy and safe food
- New Zealand farmers care about the environment

I am asking all members to hang page two of this flyer in a local shop, take it to the local school, or pass it on to a non-farming friend.

We cannot run this day without your support. If you could help out, it would be great, because the more helpers we have on deck, the easier it will be to pull off a great event.

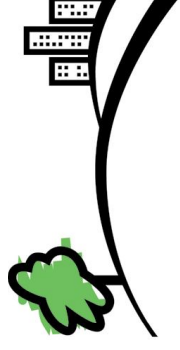


I hope to see you on March 1st.
Many thanks

Peter Adamski
Taranaki President



**FEDERATED
FARMERS**
OF NEW ZEALAND



FARM DAY

Discover the Country



SUNDAY, 1 MARCH 2009

Join us for a great day in the country, come and experience the sights, sounds and smells of farming.

WHERE: Murray and Zoe Barrett
241 Barrett Road, New Plymouth

TIME: 10am-3pm

RSVP: For all FARM DAY events please phone:
07 838 2589 or email: admin@fedfarm.org.nz

ACTIVITIES:

- One hour guided farm walk
- Pet the lambs
- Sausage sizzle/refreshments

FARM DAY is a national agricultural event coordinated and hosted by Federated Farmers of New Zealand