



SUNDAY, 1 MARCH 2009

CALLING ON ALL FEDERATED FARMERS MEMBERS

9AM-4PM (OR PART THEREOF)

WE NEED YOUR HELP

- parking cars
- welcoming guests at the gate
- guiding a walking group

If you can help out please let us know. We can't be sure how many people will be turning up so the more hands we have on deck the better.

Parking: Cars will be directed to the farm with Federated Farmers' signage. Once they arrive we need to park them in A&P showstyle in a pre-designated paddock. Please come with a safety vest.

Welcoming guests once their car is parked: Everyone will come through the same gate. They need to be welcomed, given a name tag and linked in to a group.

Guided walks: Every FARM DAY will have a guided walk around the farm. Groups will be kept to about 20 people. Each farm walk will last about one hour and there will be pre-arranged stops along the way. As the host your job will be to look after the group throughout the farm tour, tell some stories (not necessarily about this farm) and encourage the group to enjoy themselves. Your role is to be the face of farming. This is a great opportunity to build new friends in the non-farming community.

If you can help out please phone Bronwyn Wilson on 0800 327 646 or email bwilson@fedfarm.org.nz



Otago FARM DAY will be held at:

Telford Farm



'The Telford shearing class is a great opportunity to get hands on practice behind the shears'

Telford Rural Polytechnic offers great training to students wanting to develop their farming skills. If you live in the South Island, Telford is the place to come and learn how to be a farmer. The farm is spread over 800 ha and has sheep, beef, deer, dairy farms and a forestry area. It aims to perform in the top 20% of farms within Otago and Southland. It is a profitable and competitive working Polytechnic.

Hosting FARM DAY at Telford gives us a chance to promote agriculture as a career choice and sow the seed early so that farming has a future that many people can participate in.

Telford are keen to make the day interactive, and there should be plenty of opportunities for children and young people to participate in farming activities.

This is not a 'wander at will' farm tour. The public will be met at the gate, put in to groups and escorted around the farm.

We need your help on the day to make FARM DAY a success. Please think about lending a hand.

To learn more about this farm and how you can help, please email your details to the office, bwilson@fedfarm.org.nz

LOCAL VOICE NEWSLETTER SPECIAL



JANUARY 2009

OTAGO

FARM DAY

SUNDAY, 1ST MARCH 2009

Federated Farmers is holding the first New Zealand-wide, open FARM DAY on Sunday March 1st. The Otago province's FARM DAY will be held at Telford Rural Polytechnic, Balclutha.

The Otago province is right behind this great national initiative. I believe that Telford is one of the best places for non-farming families to learn about agriculture. We have such a diverse environment here that produces everything from rich, creamy chocolate to the best merino fibres in the world. It gives us an opportunity to show people how we farm, what we are growing and the way that the land responds to our care.

Our two take home messages from the day are simple and clear. We want people to remember that

- New Zealand farmers grow healthy and safe food
- New Zealand farmers care about the environment

I am asking all members to hang page two of this flyer in a local shop, take it to the local school, or pass it on to a non-farming friend.

We cannot run this day without your support. If you could help out, it would be great, because the more helpers we have on deck, the easier it will be to pull off a great event.

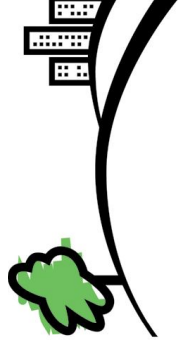


I hope to see you on March 1st.
Many thanks

Richard Burdon
Otago President



**FEDERATED
FARMERS**
OF NEW ZEALAND



FARMDAY

Discover the Country



SUNDAY, 1 MARCH 2009

Join us for a great day in the country, come and experience the sights, sounds and smells of farming.

WHERE: Telford Farm
498 Owaka Highway, Balclutha

TIME: 10am-3pm

RSVP: For all FARM DAY events please phone:
07 838 2589 or email: admin@fedfarm.org.nz

ACTIVITIES:

- Farm walk
- Interactive activities for children
- Test your farming skills

FARM DAY is a national agricultural event coordinated and hosted by Federated Farmers of New Zealand